

# Parkheath

*Sold on Service*

---

**South Hill Park Gardens NW3**  
**Asking Price £385,000**

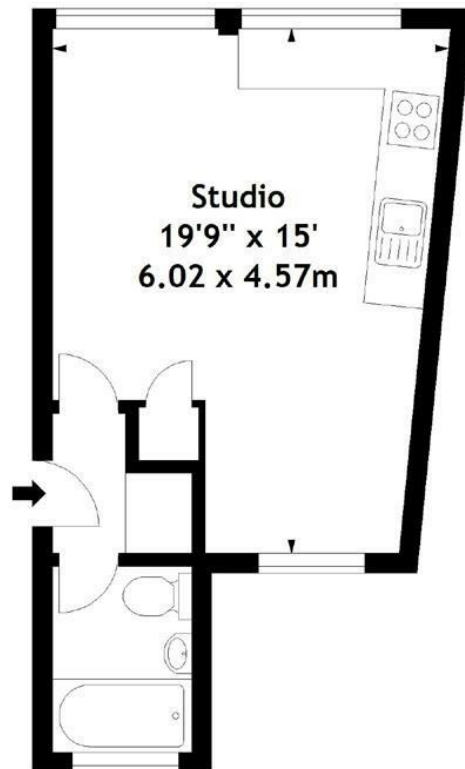


Smart studio apartment  
Small newly updated purpose built block  
Set in South Hill Park Conservation Area  
Moments from Hampstead Heath  
Bright 19` studio room

Wood floors and good natural light  
Stylish open plan kitchen with breakfast bar  
Share of freehold  
Rarity of a lock up garage  
Excellent local amenities of South End Green

Belsize Park Office 020 7431 3104

Oliver Court,  
South Hill Park Gardens, NW3  
Approx. Gross Internal Area  
316 Sq Ft - 29.36 Sq M



### Ground Floor

Measured in accordance with RICS guidelines. Every attempt is made to ensure accuracy, however all measurements are approximate.  
This floor plan is for illustrative purposes only and is not to scale.  
© Datography Ltd 2016  
Photographs \* Floorplans \* Virtual Tours  
Tel: 0845 643 4401 - www.datography.com

The particulars do not constitute part of an offer or contract. The particulars, including text, photographs and plans, are for the guidance only of prospective purchasers/tenants and must not be relied upon as statements of fact. The descriptions provided therein represent the opinion of the author and whilst given in good faith should not be construed as statements of fact. Nothing in these particulars shall be deemed a statement that the property is in good condition or otherwise or that any services or facilities are in good working order. All measurements are approximate